



ROSSLYN  
CHAPEL



Helmsley Walled Garden



ST. MARY'S LIGHTHOUSE  
WHITLEY BAY

# POSTER ART

Creative gifts for your location

# How it works

Let's work together to create a 'Poster Art' range for your location.

We start by asking you to select a view or image you would like to see on your artwork. You also need to decide the title for the artwork.

Next you can pick your products; we have lots to choose from; take a look through this brochure.

Now the fun begins, our illustrator, Bruce, will create your artwork and send it over to you for comments and to make any alterations that you require. Once this is approved we will send you visuals of your products.

Then our production team will create your products and send them to your door – this normally takes four weeks from approval of the visuals.

Each order is delivered with a point-of-sale package to help you promote the range in your retail space – see page 9.

Step 1  
Let's create a brief



Step 2  
Place an order



Step 3  
Design and proof



Step 4  
Manufacture in house



Step 5  
Delivery



Step 6  
You sell your range



## Important bits

To cover the design and set up charges we ask that you place a minimum initial order of £500 +VAT.

The price includes up to two amendments to the artwork at the design and proofing stage.

In the unlikely event that you decide to cancel the order after the artwork has been created a cancellation charge of £125 +VAT will be incurred, this will be offset should the order be reinstated.



# Products

## Art print (framed)

Print size: 11 x 14" | Frame size: 31 x 39cm

ARTPRINT02

MOQ: 10

Supplied full colour print with black frame and small information sticker on the reverse.



## Ceramic mug

Size: 8.3 x 9.5cm, 11oz

## Enamel mug with silver rim

Size: 8 x 7.8cm

## Our mugs

Both our premium coated mugs are hand decorated by us in UK, they are dishwasher safe, and the ceramic mug can be placed in the microwave.



MUGCER02

MOQ: 72

Same design printed both sides of mug. Barcode printed on swing tag.



MUG02

MOQ: 48

Same design printed both sides of mug. Barcode printed on swing tag.

# Products

## Art print (unframed)

Size: 11 x 14"

ARTPRINT01

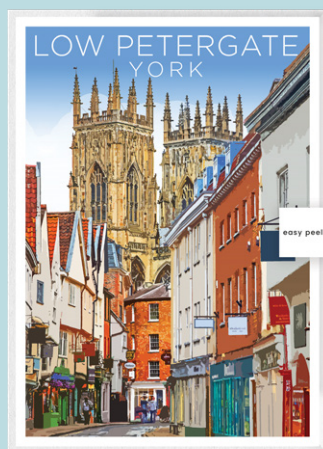
MOQ: 25



Supplied full colour print and premium grade white backing card with small information sticker. Packed in cello bag.

## Greeting card

Size: 15.5 x 10.8cm



Easy peel sticker

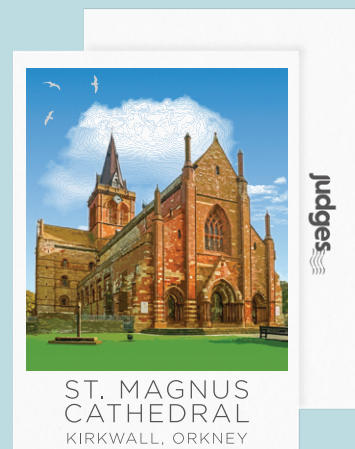
GRE015B

MOQ: 100

Supplied full colour front, blank inside. Barcode printed on reverse. Supplied with white envelope and plastic free sticker packaging.

## Postcard

Size: 14.8 x 10.5cm



PC01

MOQ: 100

Supplied full colour front, standard postcard reverse with barcode.

# Products

## Tote bag

Size: W37 x H42 x D11cm



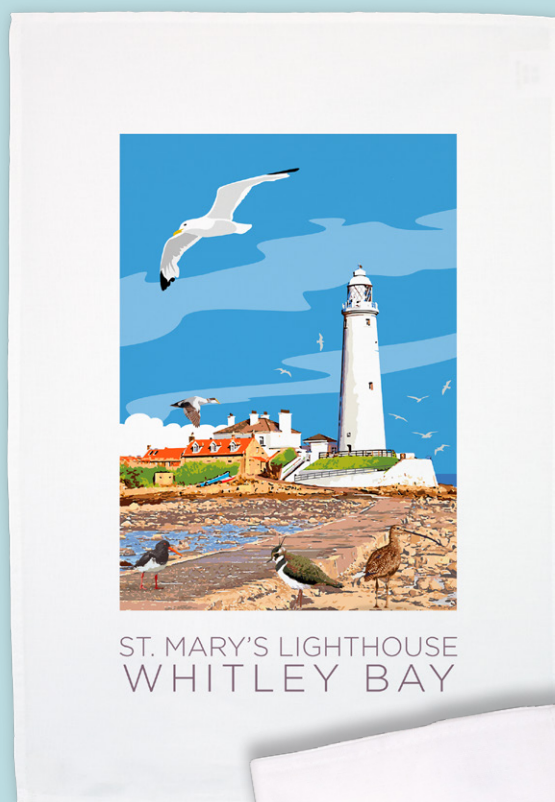
BAG02

MOQ: 50

10oz natural cotton.  
100% cotton.  
Supplied full colour front, blank on reverse.  
Barcode printed on swing tag.

## Tea towel

Size: 45 x 60cm / 100% 8oz natural cotton



ST. MARY'S LIGHTHOUSE  
WHITLEY BAY



Tea towel  
belly band

TEA02

MOQ: 50

Supplied full colour front, blank on reverse.  
Folded and supplied with belly band  
packaging with barcode on reverse.

## Our fabric printing

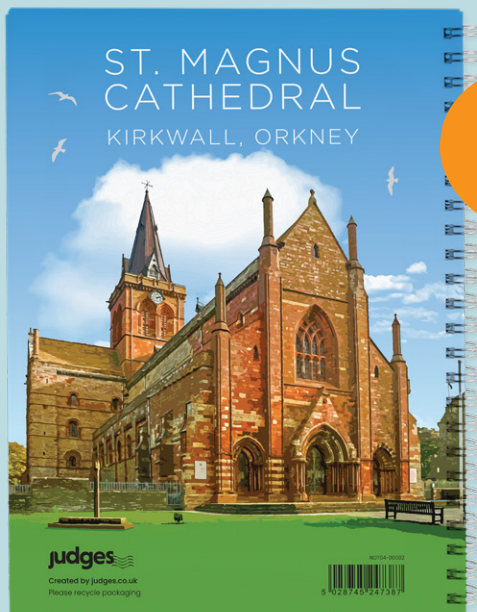
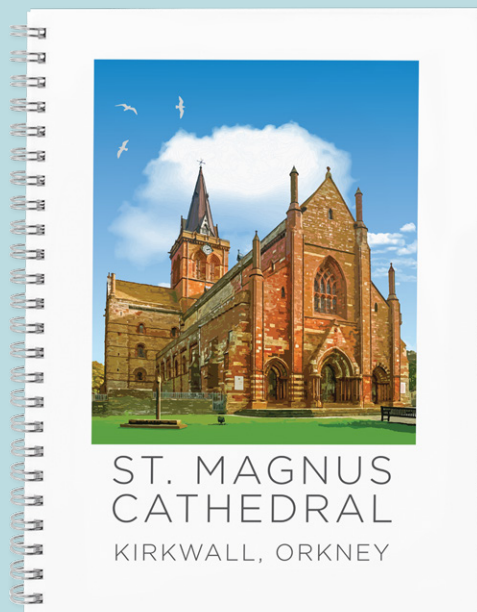
Our fabric products form a high quality backdrop for your design. They are made from natural 100% heavyweight cotton which is pre-washed to achieve superior print quality. They are manufactured in a Fair-Trade certified factory in India and printed by us in UK.



# Products

## A5 hardback notebook

Size: 14.8 x 10.5cm



Reverse of notebook

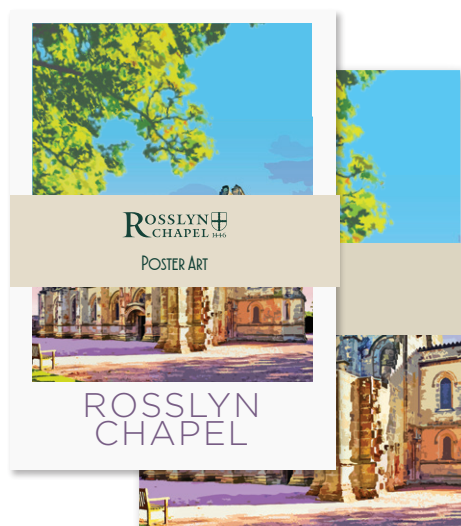
NOT04

MOQ: 50

Supplied full colour front and back. 70 pages of lined paper. Inside covers printed one solid colour that matches the design. Supplied loose, barcode printed on reverse.

## Three A5 stapled notebooks

Size: 14.8 x 10.5cm



NOT11

MOQ: 100

Supplied full colour front. 36 pages, one lined, one plain and one with graph paper. Packed in a belly band with barcode on reverse.

## Photostone keyring

Size: 2.8 x 4cm



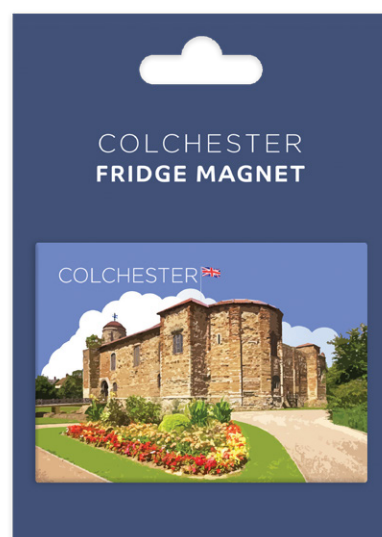
KEY04

MOQ: 100

Supplied full colour front, blank on reverse. Barcode printed on reverse of hang tag.

## Large tin plate magnet

Size: 6.5 x 9cm



MAGTIN05MT

MOQ: 100

Supplied full colour front with matt finish, blank on reverse. Barcode printed on reverse of packaging.

# Products

## Coaster

Size: 9.5 x 9.5cm



COA02MT

MOQ: 108

Supplied full colour front with matt finish, cork on reverse. Presented in card wrap with barcode on reverse.

## Pencil tube

Size: 19.5 x 3.5cm diameter



PENSET01

MOQ: 72

Supplied full colour, with barcode. Contains 12 colouring pencils in natural wood.

## Ball pen

Size: 19cm



ZPEN018

MOQ: 250

Printed full colour around barrel. Presented in card wrap with barcode on reverse.

## Set of 4 coasters

Size: 9.5 x 9.5cm

COA05MT

MOQ: 54

Supplied full colour front with matt finish, cork on reverse. Packed in card display box with barcode on reverse.





# Products

## White t-shirt

Size: XS, S, M, L, XL, XXL

TSH02    MOQ: 100, at least 10 of each size

Supplied full colour front, blank on reverse.

Packed with a swing tag with barcode on reverse.



## Our T-shirts

Our shirts are printed by us on 190gsm, 100% semi-combed ring spun white cotton. They have a ribbed collar, taped neck, twin needle stitching and a tubular body.





Poster Art  
Welcome Pack

//thank you  
for your order//

We will also send you a package with free point of sale items to help you display and promote your range.

In your exclusive pack you will get:

- Framed print of your design
- A4 show card
- Thank you card



POSTER ART  
PACKAGE DEAL



**£500** DESIGNED AND  
plus VAT DELIVERED TO  
YOUR DOOR

Included in your package deal are:

100x Postcards

10x 11"x14" Art Prints *for framing*

50x Acrylic Keyrings *with hangtag*

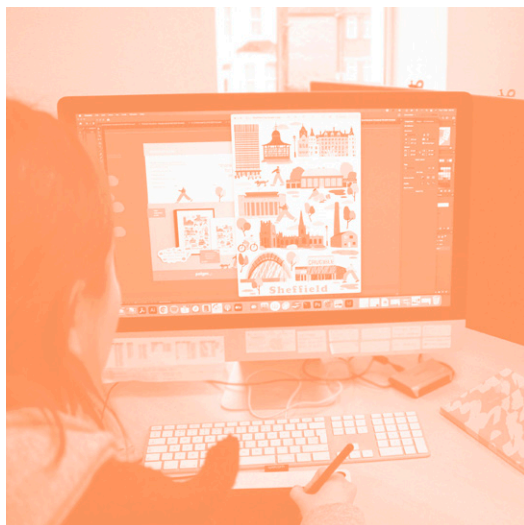
54x Coasters *loose*

50x Tin Plate Fridge Magnets *with backing card*

20x Heavy Weight Tote Bags *with swing tag*

36x Ceramic Mugs *loose*

# Our process



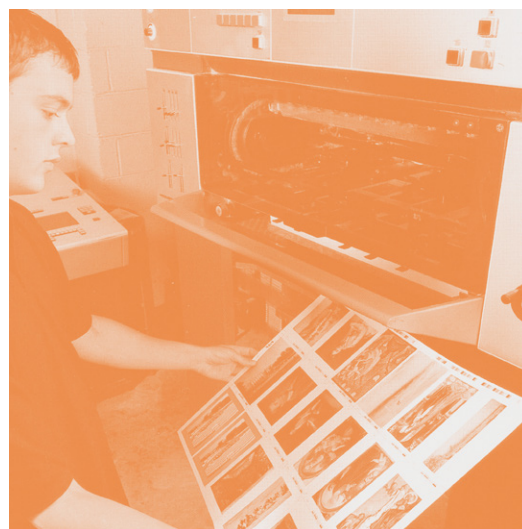
From artwork to despatch...

Everything you see in this brochure is produced in our iconic factory situated just off the seafront in (usually) sunny Hastings.

We value the ability of our team to work under the same roof, from Bruce producing the original artwork to Tash assembling your products and despatching them out the door. We like to feel that we can iron out any queries quickly and we get the best possible results from our creativity and manufacturing skills.

Gavin was first introduced to the Judges family when he joined us on a work experience placement from school and now heads up our print division over seeing our Heidelberg printing press and state of the art Xerox digital unit.

Please call by if ever you are passing, we might even treat you to a bag of chips on the beach!



## Sustainability

### Our values



Our printing inks are made from vegetable oils



Our whole factory and office suites run on low energy lights



The paper for our envelopes and the board we print on comes from well managed, sustainable and accredited sources



Our heating system has been upgraded to high efficiency boilers



All our waste printing board and cardboard are sent for recycling. Our general waste is zero landfill



As all of our design and production happens under one roof there is no need for unnecessary transportation of stock



# About us

## Judges

Designers and manufacturers of exclusive giftware.

Based on the photographic excellence of Fred Judge FRPS, Judges was founded in Hastings in 1902 and quickly established itself as one of the country's leading publishers of postcards, opening branches throughout the UK.

During his lifetime he won over 100 trophies, exhibited in America, Australia, Japan and New Zealand. He was specially honoured with one man shows in London, New York and Washington and had 83 acceptances in the annual exhibitions of the Royal Photographic Society.

In 1927 Fred relocated the business from the town centre to its current iconic premises. Over the decades the building was expanded, equipment modernised and today the company upholds Fred's ethos of creativity and quality to cater for modern demands.



## Contact

We are always happy to discuss any aspect of the design and production process.

Our office is open Monday - Friday 8.15-5.00pm and our sales@ emails are monitored outside these hours.

 [judges.co.uk](http://judges.co.uk)

 [sales@judges.co.uk](mailto:sales@judges.co.uk)

 01424 420919

 [facebook.com/judgesofhastings](https://facebook.com/judgesofhastings)

 [judgesofhastings](https://www.instagram.com/judgesofhastings)

# POSTER ART

Creative gifts for your location