



flora & fauna

by Beth Tibbles

Bespoke artwork for the wildlife in your location



How it works

Let's work together to create a Flora and Fauna range for your location.

There are 4 design elements, on pages 4-7:

- Plants
- Birds
- Insects
- Animals

You can select any 12 of these icons to make up your design.

If there is a particular plant, bird, insect or animal you would like to include, we will create one new icon for you, at no extra charge.*

We finish the design off with your title or place name.

Our design team will then create artwork proofs of each product on your order. Once approved, our production team will make your products and despatch them to your door. This normally takes a further 4 weeks.

Each order is delivered with a point-of-sale package to help you promote the range in your retail space – see page 18.

Step 1
Let's create a brief



Step 2
Place an order



Step 3
Design and proof



Step 4
Manufacture in house



Step 5
Delivery



Step 6
You sell your range



Important bits

To cover the design and set up charges we ask that you place a minimum initial order of £750 + VAT.

*One new icon is free of charge.


Second and subsequent new icons are charged at £35 each.

The price includes up-to two amendments to the artwork at the design and proofing stage. Thereafter they will cost £50 + VAT per amendment


In the unlikely event that you decide to cancel the order after the artwork has been created a cancellation charge of £250 + VAT will be incurred, this will be offset should the order be reinstated.

How it works


Here is an example of a design using our range of icons from pages 4-7, adding your own icon and a title.




NUTHATCH




ORANGE-TIP BUTTERFLY




HEATHER BUMBLEBEE




OXEYE DAISY




GREEN TIGER BEETLE




STONECHAT




PEACOCK BUTTERFLY




FOX



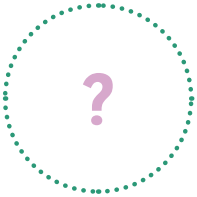
BIRD'S-FOOT TREFOIL



YELLOWHAMMER



RABBIT



YOUR TITLE HERE

Select from our standard icons on pages 4-7

Or we can draw icons of your choosing

Choose your title


How you can customise your packaging by adding your details/logo to the reverse. (mug swing tag example)

flora
& fauna
by Beth Tibbles

your details/logo here

ceramic mug

created by judges.co.uk



5 028745 223541

Please recycle this packaging

Front

Back

Choose your icons | Plants

Or we can draw
icons of your
choosing



Dog Violet



Bird's-Foot Trefoil



Foxglove



Oxeye Daisy



Wild Garlic



Red Clover



Yellow Archangel



English Bluebell



Yarrow

Choose your icons | Birds

Or we can draw
icons of your
choosing



Yellowhammer



Skylark



Nuthatch



Treecreeper



Bullfinch



Stonechat



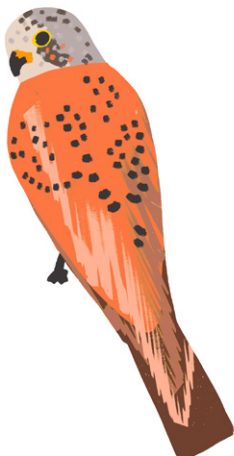
Raven



Great-Spotted
Woodpecker



Buzzard



Kestrel



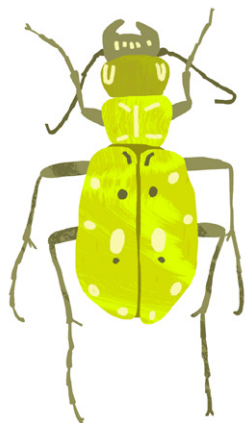
Linnet



Goldcrest

Choose your icons | Insects

Or we can draw
icons of your
choosing



Green Tiger Beetle



Orange-Tip Butterfly



Elephant Hawk Moth



Ant Mimic Jumping Spider



Heather Bumblebee



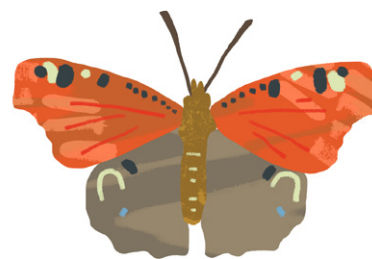
Rosel's Bush-Cricket



Speckled Wood Butterfly



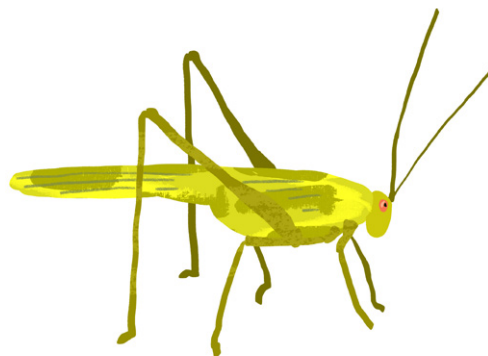
Minotaur Beetle



Peacock Butterfly



Long Horned Bee



Sickle-Bearing-Bush-Cricket



Webb's Wainscot

Choose your icons | Animals

Or we can draw
icons of your
choosing



Stoat



Badger



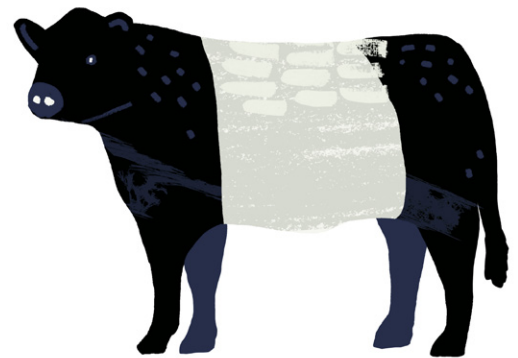
Weasel



Fox



Rabbit



Cow



Mole



Pipistrelle Bat



Common Shrew



Wood Mouse



Field Vole



Hedgehog

Products

Range created for
The Bale House, Hastings



Products

Art print (framed)

Print size: 11 x 14" | Frame size: 31 x 39cm

ARTPRINT02

MOQ: 10

Supplied full colour print with black frame and small information sticker on the reverse.



Ceramic mug

Size: 8.3 x 9.5cm, 11oz



MUGCER02

MOQ: 72

Barcode printed on swing tag.

Enamel mug with silver rim

Size: 8 x 7.8cm



MUG02

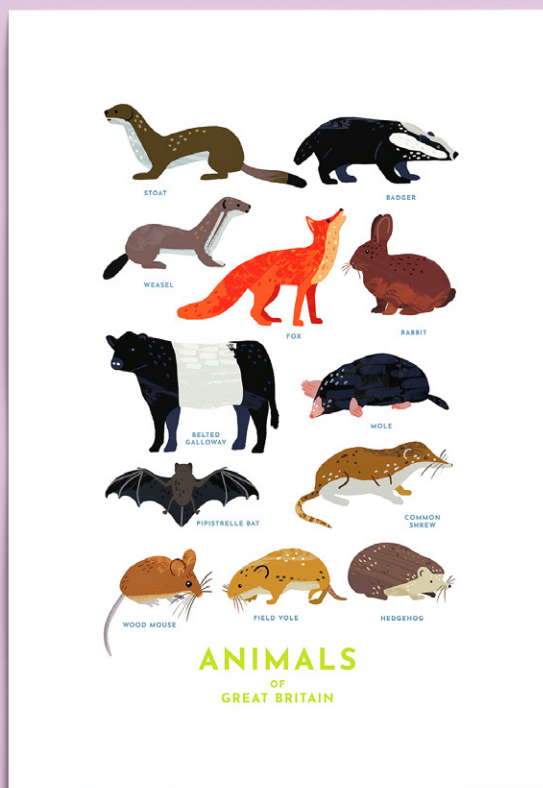
MOQ: 48

Barcode printed on swing tag.

Our mugs

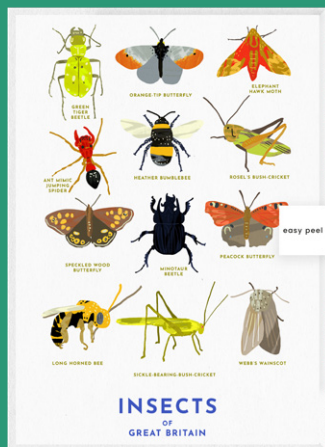
Both our premium coated mugs are hand decorated by us in UK, they are dishwasher safe, and the ceramic mug can be placed in the microwave.

Products



Greeting card

Size: 15.5 x 10.8cm



GRE015S

MOQ: 100

Supplied full colour front, blank inside.
Barcode printed on reverse.
Supplied with white envelope
and plastic free sticker packaging.

Postcard

Size: 14.8 x 10.5cm



PC01

MOO: 100

Supplied full colour front, standard postcard reverse with barcode.

Products

Tote bag

Size: W37 x H42 x D11cm



BAG02

MOQ: 50

10oz natural cotton. 100% cotton.
Supplied full colour front, blank on reverse.
Barcode printed on swing tag.

Our fabric printing

Our fabric products form a high quality backdrop for your design. They are made from natural 100% heavyweight cotton which is pre-washed to achieve superior print quality. They are manufactured in a Fair-Trade certified factory in India and printed by us in UK.

Products

Tea towel

Size: 45 x 60cm / 100% 8oz natural cotton



TEA02

MOQ: 50

Supplied full colour front, blank on reverse.
Folded and supplied with belly band
packaging with barcode on reverse.



4 button badge set

Size: 3.8cm



BAD04

MOQ: 100

Presented on a backing card
with barcode on reverse.

Products

Coaster

Size: 9.5 x 9.5cm



COA02MT

MOQ: 108

Supplied full colour front, cork on reverse.
Presented in card wrap with
barcode on reverse.

Pencil tube

Size: 19.5 x 3.5cm diameter



PENSET01

MOQ: 72

Supplied full colour, with barcode.
Contains 12 colouring pencils
in natural wood.

Set of 4 coasters

Size: 9.5 x 9.5cm

COA05MT

MOQ: 54

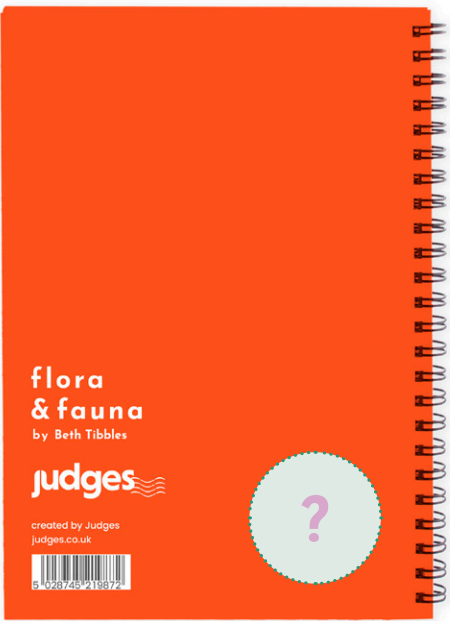
Supplied full colour front, cork on reverse.
Packed in card display box
with barcode on reverse.



Products

A5 hardback notebook

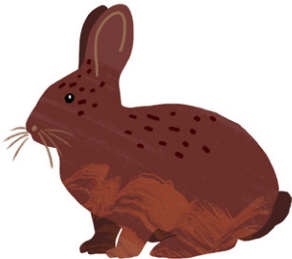
Size: 14.8 x 10.5cm



Your details/
logo on the
reverse

NOT04 MOQ: 50

Supplied full colour front and back.
70 pages of lined paper. Inside covers
printed one solid colour that matches
the design. Supplied loose, barcode
printed on reverse.



Magnetic memo pad

Size: 21 x 10cm / 100gsm, 40pp



NOT07 MOQ: 100

Supplied full colour front, 40 pages.
Magnets on reverse of backing card.
Packaged in belly band with barcode on reverse.

Three A5 stapled notebooks

Size: 14.8 x 10.5cm



NOT11 MOQ: 100

Supplied full colour front.
36 pages, one lined, one plain and one with graph paper.
Packed in a belly band with barcode on reverse.

About us

We have been printing for 120 years from our historic base in Hastings. We now have Heidelberg lithographic equipment together with state-of-the-art digital printers and all our design and finishing takes place under the same roof.



Products

Sticker sheet

Size: 16 x 14cm



STICA5

MOQ: 100

Packed in biodegradable cello bag with header card and barcode on reverse.

Photostone keyring

Size: 2.8 x 4cm



KEY04

MOQ: 100

Supplied full colour front, blank on reverse. Barcode printed on reverse of hang tag.



Large tin plate magnet

Size: 6.5 x 9cm



MAGTIN05MT

MOQ: 100

Supplied full colour front with matt finish, blank on reverse. Barcode printed on reverse of packaging.

Card bookmark

Size: 18 x 5cm / 300gsm



BOO02

MOQ: 100

Supplied full colour front on 415 micron card, barcode printed on reverse.



Products

White t-shirt

Size: XS, S, M, L, XL, XXL

TSH02

MOQ: 50, at least 10 of each size

Supplied full colour front, blank on reverse.

Packed with a swing ticket with barcode on reverse.



Our T-shirts

Our shirts are printed by us on 190gsm, 100% semi-combed ring spun white cotton. They have a ribbed collar, taped neck, twin needle stitching and a tubular body.



Point of sale

We will also send you a package with free point of sale items to help you display and promote your range.

In your exclusive pack you will get:

- Framed print of your design
- A4 show card
- Thank you card

“Thank you
for your
order”



Flora & Fauna welcome pack



Our process



From artwork to despatch...
Everything you see in this brochure
is produced in our iconic factory
situated just off the seafront in
(usually) sunny Hastings.

We value the ability of our team
to work under the same roof,
from Beth producing the original
artwork to Tash assembling your
products and despatching them
out the door. We like to feel that we
can iron out any queries quickly
and we get the best possible
results from our creativity and
manufacturing skills.



Gavin, was first introduced to the
Judges family when he joined us
on a work experience placement
from school and now heads up
our print division over seeing our
Heidelberg printing press and
state of the art Xerox digital unit.

Please call by if ever you are
passing, we might even treat you
to a bag of chips on the beach!



Sustainability



Our printing inks are made from vegetable oils



The paper for our envelopes and the board we print on comes from well managed, sustainable and accredited sources



All our waste printing board and cardboard are sent for recycling. Our general waste is zero landfill



Our whole factory and office suites run on low energy lights



Our heating system has been upgraded to high efficiency boilers



As all of our design and production happens under one roof there is no need for unnecessary transportation of stock

About us

Judges

Designers and manufacturers of exclusive gift ware.

Based on the photographic excellence of Fred Judge FRPS, Judges was founded in Hastings in 1902 and quickly established itself as one of the country's leading publishers of postcards, opening branches throughout the UK.

During his lifetime he won over 100 trophies, exhibited in America, Australia, Japan and New Zealand. He was specially honoured with one man shows in London, New York and Washington and had 83 acceptances in the annual exhibitions of the Royal Photographic Society

In 1927 Fred relocated the business from the town centre to its current iconic premises, over the decades the building was expanded, equipment modernised and today the company upholds Fred's ethos of creativity and quality to cater for modern demands.



Contact

We are always happy to discuss any aspect of the design and production process.

Our office is open Monday- Friday 8.15-5.0pm and our sales@ emails are monitored outside these hours.

 judges.co.uk

 sales@judges.co.uk

 01424 420919

 facebook.com/judgesofhastings

 judgesofhastings





Range created for
The Bale House, Hastings





flora & fauna

by Beth Tibbles

Creative gifts for your location